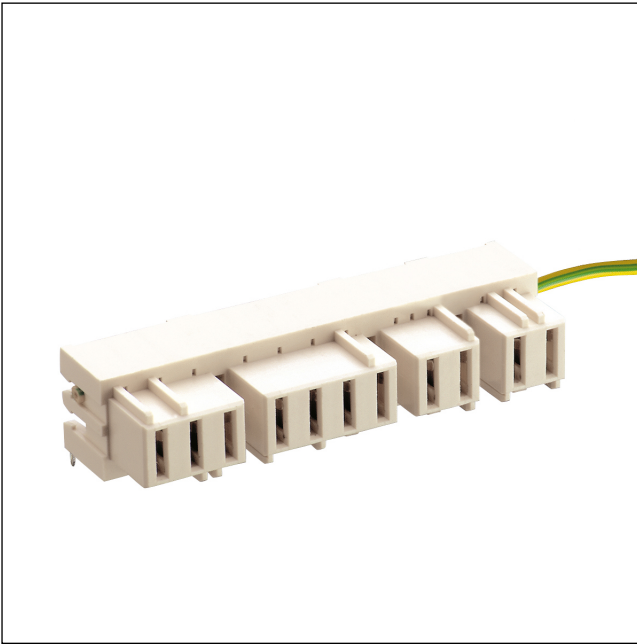


36

3687

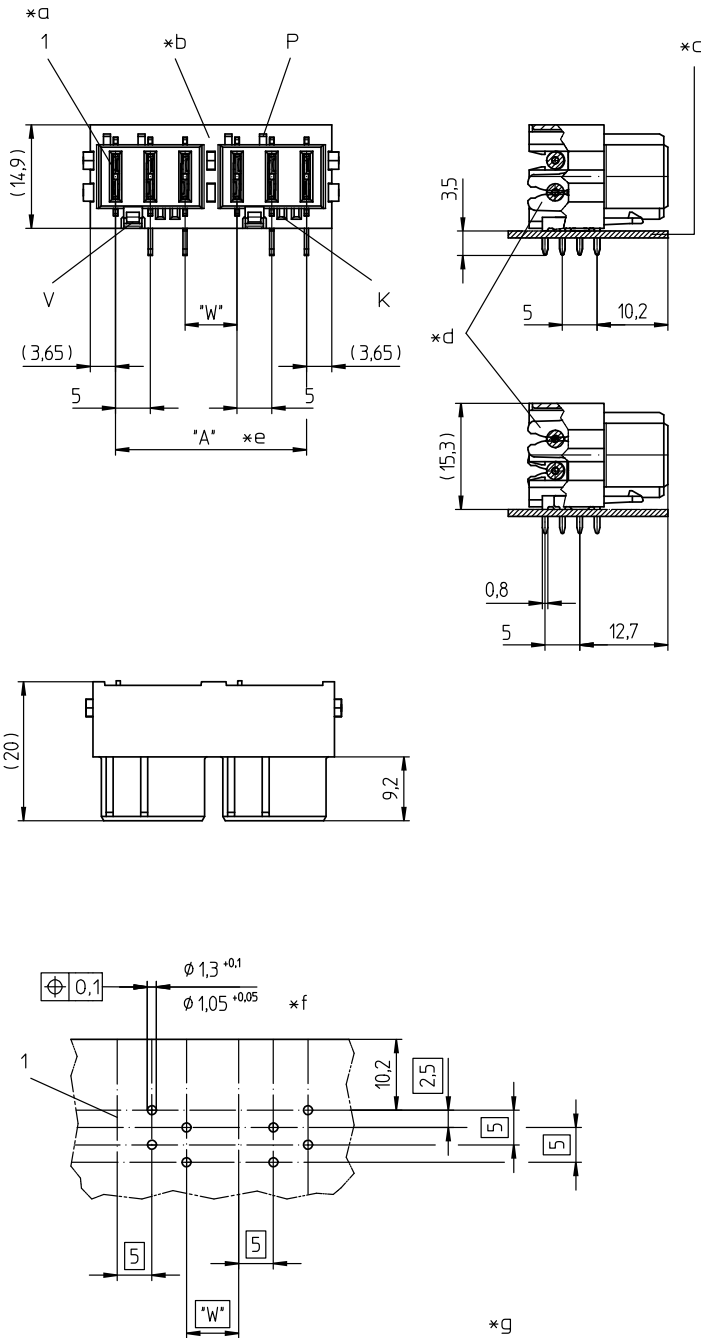
RAST 5 connectors, pitch 5.0 mm



RAST 5 socket board, angular, free to configure with partitions and neutral and/or protective conductor bridge in insulation displacement technique (IDT)

Approvals:





Environmental conditions

Temperature range -25 °C/+120 °C¹
¹ upper limit temperature (insulating body) RTI (electric) according to UL Yellow Card

Materials

Insulating body PA GF, V-0 according to UL94¹
 Contact spring CuSn, tin-plated
¹ component glow wire resistant (GWT 750 °C), testing acc. to IEC 60695-2-11, assessment acc. to IEC 60335-1 (flame < 2 s)

Mechanical data

Bridge conductor stranded wire LiY 0.75 mm²
 Insertion force/contact ≤ 4,0 N¹
 Withdrawal force/contact ≥ 1,0 N¹
¹ measured with a polished flat steel pin, nominal thickness 0.8 mm

Electrical data (at T_{amb} 20 °C)

Contact resistance ≤ 5 mΩ
 Rated current 10 A (T_{amb} 70 °C, VDE/ULus)
 7 A (T_{amb} 70 °C, cUL)
 Rated voltage 250 V AC (VDE/cULus)
 Material group IIIa (IEC)/2 (UL) (CTI ≥ 250)
 Creepage distance 4,2 mm
 Clearance 4,2 mm
 Insulation resistance > 10 GΩ

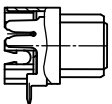
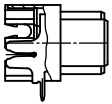
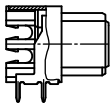
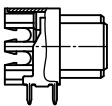
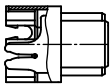
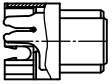
Associated products

Counterparts
 ☞ 3618 ☞ 3618-1 ☞ 3618-2
 ☞ 3618-3 ☞ 361899 ☞ 361899-1
 ☞ 361899-2 ☞ 361899-3 ☞ 3647

36

3687

types of contacts



- *a K = keying
P = positioning
V = lock
- *b partition, space for frames of counterparts
- *c printed circuit board
- *d insulation displacement contacts with neutral/protective conductor bridges
- *e $A = (P - 1) \times 5 + (W - 5) \times Y$, max. 125 mm with one-piece insulating body
P = poles
W = 7.5 mm/12.5 mm/15.0 mm
Y = number of partitions (at least 1 partition every 12 contacts)
- *f bore hole diameter 1.05 mm for press-fit of solder pins in printed circuit board
- *g example for printed circuit board layout, solder side view

Designation	Pole Number	PU (Pieces)	MDQ (Pieces)
3687 02	2		200
3687 03	3		200
3687 04	4		200
3687 05	5		200
3687 06	6		200
3687 07	7		200
3687 08	8		200
3687 09	9		200
3687 10	10		200
3687 11	11		200
3687 12	12		200
3687 13	13		200
3687 14	14		200
3687 15	15		200
3687 16	16		200
3687 17	17		200
3687 18	18		200
3687 19	19		200
3687 20	20		200
3687 21	21		200
3687 22	22		200
3687 23	23		200
3687 24	24		200
3687 25	25		200
3687 26	26		200

Designation to be completed by further details (e.g. for keying, color or material options).

Packaging:
in a cardboard box